

All Services

- No hugs or handshakes ☹️
- Everyone enters thru front doors

9:00 AM Service

- Temp checked at the door (100° max)
- Wear masks at all times unless seated and 6' from others
- Greeters wear masks

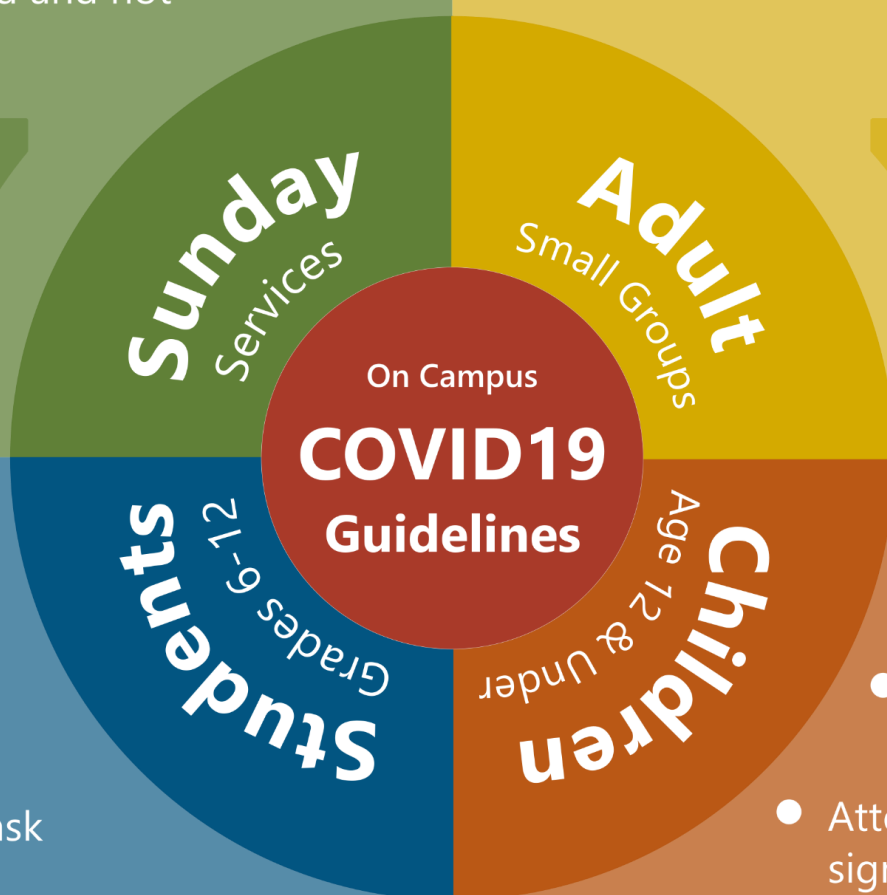
11:00 AM Service

- Masks encouraged- especially when not seated and not 6' from others

*masks are optional on-stage when 6' apart

- Class to create their own policy* and maintain consistency
- Policy must be communicated to new guests upon first visit
- Practicing social distancing and wearing masks is encouraged

*please communicate policy to Mike Erwin



- Stay minimum of 3' apart
- Must wear a mask
- If a 6' distance can be maintained, wearing a mask is optional while seated

- Temp check before entering room (all)
- Attendance system sign-in required for kids to enter children's wing

- Teachers wear masks and wash hands often
- Masks are not required for kids under 6
- Kids age 6 - 12 must wear masks & stay a minimum of 3' apart (ideally 6')

Disallow if temperature over 100°, cough, or runny nose present